



OEB G-FOUR

SYMPOSIUM

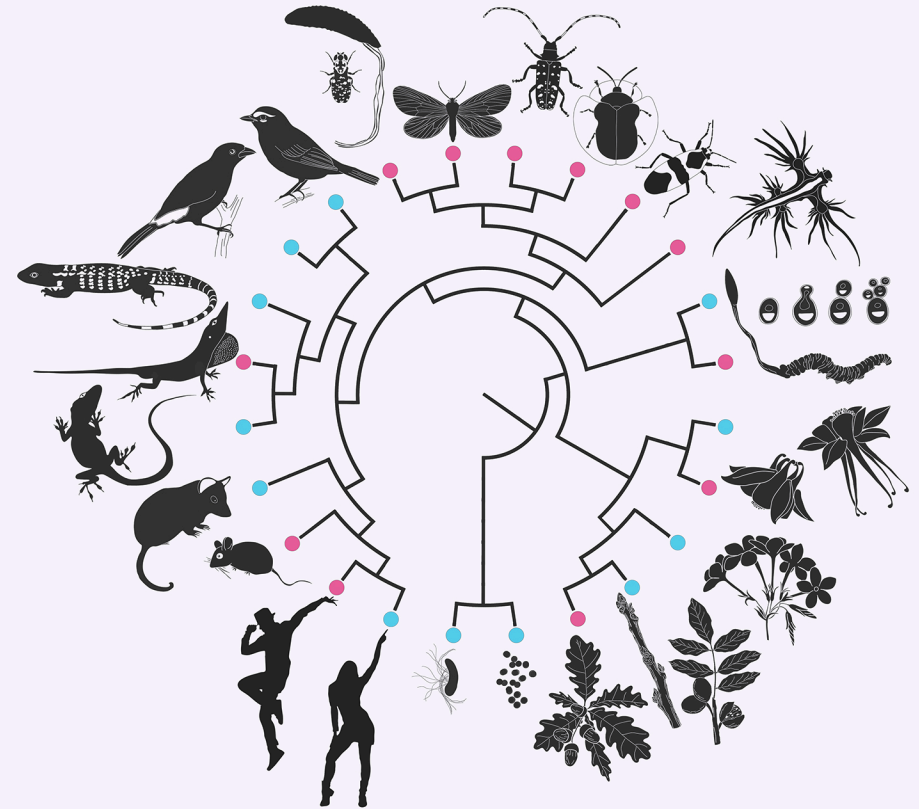
● MAY 2ND, 2019 ● MAY 3RD, 2019

BIOLABS LECTURE HALL

THIS YEAR'S G4 SYMPOSIUM WAS
ORGANIZED AND SUPPORTED BY:
LYDIA CARMOSINO
KARI TAYLOR-BURT
MIRIAM JOHNSTON

PROGRAM WAS
DESIGNED AND ILLUSTRATED BY:
MIN YA

MANY THANKS
TO THE FACULTY INTRODUCERS
AND
EVERYONE
WHO CAME TO
CELEBRATE
OUR G4 STUDENTS!



Thursday, May 2nd

9:30 - 10:00	Welcome reception	
10:00-10:05	Opening remarks	
10:05-10:30	Samuel Church	Extavour Lab
	<i>Insect egg size, shape, and evolution</i>	
10:30-10:55	Zhengyang Wang	N. Pierce Lab
	<i>Evolution of Thitarodes moths (Lepidoptera: Hepialidae) in the Hengduan mountains</i>	
10:55-11:20	Sang Il Kim	Farrell Lab
	<i>Out of the tropics: Genomic and evolutionary origins of longhorn beetles (Cerambycidae) in the temperate zone</i>	
11:20-11:45	Amanee Lochab	Extavour Lab
	<i>The early journey of sex cells</i>	
11:45-12:45	Light lunch	
12:45-1:10	James Xue	Sabeti Lab
	<i>Uncovering lost sequences: Genome-wide functional screen of human-specific deletions</i>	
1:10-1:35	Alyssa Hernandez	Farrell Lab
	<i>Where the rubber meets the road: How do phytophagous beetles hold onto host plants?</i>	
1:35-2:00	Jess Gersony	Holbrook Lab
	<i>Carbon's tangled up in blue: Interactions between sugars and water in tree leaves</i>	
2:00-2:25	Nicholas Herrmann	Losos Lab & Haig Group
	<i>Individual and population level responses to competitive release in Anolis lizards</i>	
2:25-2:45	Break - refreshments	
2:45-3:10	Brock Wooldridge	Hoekstra Lab
	<i>A genome-wide investigation into shared versus independent signatures of selection in the repeated evolution of forest-adapted deer mice</i>	
3:10-3:35	Vanessa Knutson	Giribet Lab
	<i>An inordinate fondness for slugs: Phylogenomics of the gastropod clade Heterobranchia</i>	
3:35-4:00	Molly B. Edwards	Kramer Lab
	<i>Bringing petals to the third dimension</i>	
4:00-5:30	Closing Reception	

Friday, May 3rd

9:30 - 10:00	Welcome reception	
10:00 - 10:05	Opening remarks	
10:05-10:30	Sofia Prado-Irwin	Losos & Edwards Labs
	<i>Diversification of a widespread Central American anole</i>	
10:30-10:55	Phil Lai	S. Pierce & Biewener Labs
	<i>Breaking it down, building it up: Functional transformation of the forelimb in mammalian evolution</i>	
10:55-11:20	Dakota E. McCoy	Haig Group
	<i>Optical manipulations: Red birds and high-stakes testing</i>	
11:20-11:45	C. Jonathan Schmitt	Edwards Lab
	<i>Phylogeography and color evolution of an Andean tanager</i>	
11:45-12:45	Light lunch	
12:45-1:10	Éadaoin Harney	Wakeley & Reich Labs
	<i>Mysterious skeletons and statistics: Exploring human history using ancient DNA</i>	
1:10-1:35	Kristel Schoonderwoerd	Friedman Lab
	<i>Naked buds in temperate, woody plants -- a winter's tale?</i>	
1:35-2:00	Benjamin Goulet	Hopkins Lab
	<i>Gene flow and speciation in a wildflower</i>	
2:00-2:25	Milo Johnson	Desai Lab
	<i>It's hard being fit: Genetic variation in mutational robustness in yeast</i>	
2:25-2:45	Break - refreshments	
2:45-3:10	Brandon C. Enalls	Girguis Lab
	<i>Current affairs: The role extracellular electron uptake in the ecophysiology of hydrothermal vent microbes</i>	
3:10-3:35	Daniel R. Utter	Cavanaugh Lab
	<i>Why bacteria live where they do: Habitat specialization in the human mouth</i>	
3:35-4:00	Min Ya	Kramer Lab
	<i>Termination of floral meristem -- what happens when stem cells are no longer needed?</i>	
4:00-5:30	Closing Reception	